

Accessory List

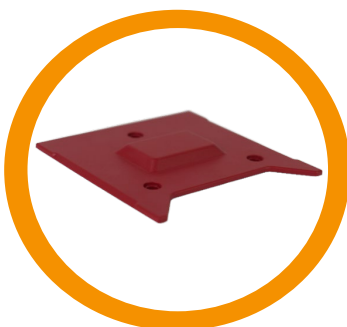
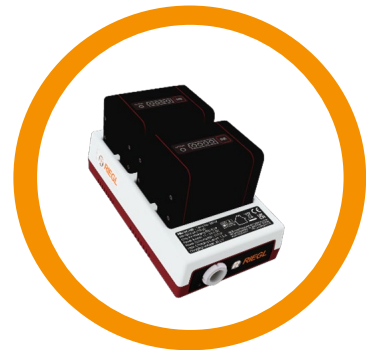
RIEGL VZ-600i / RIEGL VZ-1200i

Terrestrial Laser Scanner



RIEGL VZ-600i

RIEGL VZ-1200i





Overview

■ ... indicated items are part of the scanner basic configuration
 □ ... optional items

*Click on the accessory and go directly to the specifications!

| | VZ-600i | VZ-1200i |
|--|---------|----------|
| Tripods | | |
| Harsh Environment Carbon Tripod 165 Ne | □ | □ |
| Lightweight Carbon Tripod 160In | □ | □ |
| 3-Point Setup Stand with Adapter for Lightweight Carbon Tripod | □ | □ |
| Mounting adapter for Lightweight Carbon Tripod for VZ-i Series | □ | □ |
| Quick-release mount for with 5/8" and 10 mounting holes | □ | □ |
| Quick-release mount for with 5/8" | □ | □ |
| 30° Tilt Mount | □ | □ |
| 45° Tilt Mount | □ | □ |
| Carbon Surveyor's Tripod | □ | □ |
| Stable, Professional Tripod | □ | □ |
| Tripod Star | □ | □ |
| GNSS Option | | |
| <i>RIEGL</i> GNSS RTK Receiver, Ri-RTKM | □ | □ |
| Mounting Adapter for external GNSS Receiver, Ri-GNSSM | □ | □ |
| Cable for external GNSS, Lemo (6 pole) to SUB-D and BNC, length 270 mm | □ | □ |
| <i>RIEGL</i> GNSS Receiver, Ri-GNSS-t-L1 | ■ | ■ |
| Power Supply Options | | |
| AC Power Supply Unit for VZ-xx | ■ | ■ |
| Battery-Pack Li-Ion RBLI 8S1P | □ | □ |
| Dual Charger for <i>RIEGL</i> RBLI 8S1P | □ | □ |
| Charging Station for <i>RIEGL</i> RBLI 8S1P | □ | □ |
| Power Supply Cable 2 pole to cigarette lighter plug for V-Line, 2m | □ | □ |
| Rechargeable NiMH Battery for External Power Supply | □ | □ |
| Automatic Charger for External NiMH Battery | □ | □ |
| Power Supply Cable, 7 pole to 2 pole for V-Line, 2m | □ | □ |
| Adapter Cable, from banana plugs to power supply cable, 1m | □ | □ |
| Adapter Cable, 1m, from 7 pole supply cable to 12 V PbGel battery ("quick action") | □ | □ |
| Adapter Cable, 1m, from 7 pole supply cable to 12 V PbGel battery ("crocodile") | □ | □ |
| Camera and Camera Accessories | | |
| Sony ILX-LR1 Camera | □ | □ |
| Sony Lens FE 14 mm F 1.8 GM | □ | □ |
| <i>RIEGL</i> GNSS RTK Receiver with mount for Sony ILX-LR1, Ri-RTKCM2 | □ | □ |
| <i>RIEGL</i> camera mount for RICOH THETA Z1, Ri-RTZ1CM2 | □ | □ |
| <i>RIEGL</i> camera mount with RICOH THETA Z1, Ri-RTZ1CM2 | □ | □ |
| Accessories for Transport and Protection | | |
| Scanner Carrying Case with Sony ILX-LR1 | □ | □ |
| Carrying Case for Ri-RTKM Ri-RTZ1CM Ri-RTZ1CM2 Ri-GNSS-t-L1 | □ | □ |
| Set of Protection Caps | ■ | ■ |
| Scanner "backpack" for carrying a 3D laser scanner VZ-i Series | □ | □ |
| Scanner „backpack“ for carrying a 3D laser scanner | □ | □ |
| Accessories for Kinematic Data Acquisition | | |
| VZ-i-Car-Mount | □ | □ |
| Retroreflectors | | |
| Flat Circular Retroreflectors | ■ / □ | ■ / □ |
| Cylindrical Retroreflectors | □ | □ |



*Click on the accessory and go directly to the specifications!

| | VZ-600i | VZ-1200i |
|---|--|--|
| Biaxial Bireflex Flat Circular Retroreflectors | <input type="checkbox"/> | <input type="checkbox"/> |
| Other Accessories | | |
| TCP/IP Cable M12-RJ45, 1m | <input checked="" type="checkbox"/> | <input checked="" type="checkbox"/> |
| TCP/IP Cable M12-RJ45, 3m | <input type="checkbox"/> | <input type="checkbox"/> |
| USB Debug Cable for, 1.5m | <input checked="" type="checkbox"/> | <input checked="" type="checkbox"/> |
| CF-Express Typ B Card Reader PKT | <input checked="" type="checkbox"/> | <input checked="" type="checkbox"/> |
| CF-Express Card™ Card | <input checked="" type="checkbox"/> / <input type="checkbox"/> | <input checked="" type="checkbox"/> / <input type="checkbox"/> |
| Service Options | | |
| Basic Service Package for VZ-600i | <input type="checkbox"/> | |
| Basic Service Package for VZ-1200i | | <input type="checkbox"/> |
| Digital Camera Calibration Service for V-Line Scanner | <input type="checkbox"/> | <input type="checkbox"/> |
| Post-Processing Software | | |
| RiSCAN PRO Static LiDAR Data Processing | <input checked="" type="checkbox"/> / <input type="checkbox"/> | <input checked="" type="checkbox"/> / <input type="checkbox"/> |
| <i>RIEGL</i> Deep Learning Suite | <input type="checkbox"/> | <input type="checkbox"/> |
| RiSOLVE Static LiDAR Data Processing for Rapid Response | <input type="checkbox"/> | <input type="checkbox"/> |
| RiMINING Static LiDAR Data Processing for Mining | <input type="checkbox"/> | <input type="checkbox"/> |
| Post-Processing Software Plug-Ins | | |
| RiPANO Publishing | <input type="checkbox"/> | <input type="checkbox"/> |
| LIS Tree Analyzer Plug-In | <input type="checkbox"/> | <input type="checkbox"/> |
| LIS GeoTec Plug-In | <input type="checkbox"/> | <input type="checkbox"/> |
| Static Multi Station Adjustment License | <input type="checkbox"/> | <input type="checkbox"/> |
| RiSCAN PRO Kinematic Data Processing | <input type="checkbox"/> | <input type="checkbox"/> |
| RiUNITE – RiWORLD functionality, LIGHT | <input type="checkbox"/> | <input type="checkbox"/> |
| Extended Maintenance for RiUNITE – RiWORLD functionality, LIGHT | <input type="checkbox"/> | <input type="checkbox"/> |
| <i>RIEGL</i> Post-Processing Apps | | |
| <i>RIEGL</i> Monitoring Apps for VZ-i Series | <input type="checkbox"/> | <input type="checkbox"/> |

... indicated items are part of the scanner basic configuration
 ... optional items

Tripods

Harsh Environment Carbon Tripod 165 Ne

 Part-No. HW-GP-06-586-00

maximum load 30 kg
weight: 2.5 kg
height: 165 cm

The tripod has a spike on each leg that can be unscrewed if desired.



Lightweight Carbon Tripod 160In

 Part-No. HW-GP-06-590-00

maximum load: 30 kg
weight: 2.2 kg
height: 160 cm




3-Point Setup Stand with Adapter for Lightweight Carbon Tripod

 Part-No. HW-VZI-06-009-00

weight: 0.22 kg



Mounting adapter for Lightweight Carbon Tripod for VZ-i Series

 Part-No. HW-GP-06-536-00

weight: 0.35 kg

This mounting adapter is suitable for laser scanners like *RIEGL* VZ-400i and surveying instruments with a 5/8" thread.



Quick-release mount for with 5/8" and 10 mounting holes

➤ Part-No. HW-VZI-06-023-00

weight: 0.45 kg

with locking bolt



Quick-release mount for with 5/8"

➤ Part-No. HW-VZI-06-030-00

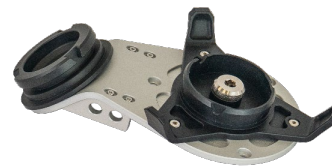
weight: 0.2 kg



30° Tilt Mount

➤ Part-No. HW-VZI-06-022-01

weight: 0.65 kg



45° Tilt Mount

➤ Part-No. HW-VZI-06-021-00

weight: 0.7 kg



VZ-600i to VZ-400i adapter

➤ Part-No. HW-VZI-06-014-00

weight: 0.23 kg



Carbon Surveyor's Tripod

➤ Part-No. HW-GP-06-474-00

maximum load: 22 kg

weight: 4.9 kg

height: 193 cm



Stable, Professional Tripod

 Part-No. HW-GP-06-370-00

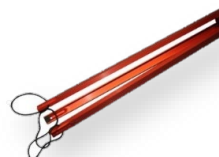
weight 7.60 kg
height: 170 cm



Tripod Star for Operation on Smooth Surfaces

 Part-No. HW-GP-06-001-00

weight: 0.35 kg



GNSS Options

RIEGL GNSS RTK Receiver, Ri-RTKM

 Part-No. HW-VZI-06-008-00

weight: 0.62 kg




Mounting Adapter for external GNSS Receiver, Ri-GNSSM

 Part-No. HW-VZI-06-027-00

weight: 0.52 kg
thread size: 5/8"



Cable for external GNSS, Lemo (6 pole) to SUB-D and BNC, length 270 mm

 Part-No. HW-VZXX-03-006-00

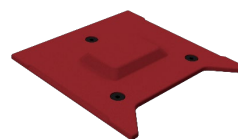


RIEGL GNSS Receiver, Ri-GNSS-t-L1

 Part-No. HW-VZI-06-016-00

- L1-Band, 4 concurrent GNSS (GPS, GLONASS, Galileo, BeiDou)
- GNSS on Top

weight: 0.08 kg



Power Supply Options

AC Power Supply Unit for VZ-xx

 Part-No. HW-VZXX-04-000-00

For *RIEGL* VZ-xx, 100 - 240 V AC, 50 - 60 Hz

- for direct operation of the scanner from main power supply
- for supplying e.g. the
 - Dual Charger (Part-No. HW-VZXX-04-010-00) or
 - Charging Station (Part-No. HW-VZXX-04-011-00)



symbolic image – EU version

weight: 0.43 kg

Battery-Pack Li-Ion RBLI 8S1P

 Part-No. HW-VZXX-04-009-00

- Li-Ion 28.8 V Technology
- Capacity 99 Wh, 3.45 Ah
- Battery pack life typ. 500 - 600 charging cycles



weight: 0.46 kg

Dual Charger for *RIEGL* RBLI 8S1P

 Part-No. HW-VZXX-04-010-00

Provides the possibility to charge up to 2 (two) *RIEGL* RBLI 8S1P batteries at the same time

- Input Supply Voltage 11-34 V
- Charging time 2,75 h for two batteries
- Size 94 x 42 x 170 (mm)
- **RBLI 8S1P batteries (Part-No. HW-VZXX-04-009-00) and AC Power Supply Unit (Part-No. HW-VZXX-04-000-00) not included**



weight: 0.26 kg

Charging Station for *RIEGL* RBLI 8S1P

 Part-No. HW-VZXX-04-011-00

Provides the possibility to charge up to 6 *RIEGL* RBLI 8S1P batteries at the same time

Input Supply Voltage 11-34 V

Charging time

- up to 3 batteries 2,75 h

- 4 batteries 4,5 h

- 6 batteries 5,5 h

Size 350 x 295 x 150 (mm)

AC Power Supply Unit

(Part-No. HW-VZXX-04-000-00) included


RBLI 8S1P batteries

(Part-No. HW-VZXX-04-009-00) not included

weight: 3.70 kg



Power Supply Cable 2 pole to cigarette lighter plug for V-Line, 2m

 Part-No. HW-VXX-03-052-00

Compatible with e.g.

- Dual Charger

(Part-No. HW-VZXX-04-010-00) or

- Charging Station

(Part-No. HW-VZXX-04-011-00)

weight: 0.16 kg



Rechargeable NiMH Battery for External Power Supply

 Part-No. HW-GP-04-000-00

13.2 V, 18 Ah, 238 Wh, with fuse

weight: 3.37 kg



 intended for combined use!

Automatic Charger for External NiMH Battery

➤ Part-No. HW-GP-04-001-00

100 - 240 V AC, short circuit proof

weight: 0.75 kg



Power Supply Cable, 7 pole to 2 pole for V-Line, 2m

➤ Part-No. HW-VXX-03-011-01

weight: 0.25 kg



Adapter Cable, from banana plugs to power supply cable, 1m

➤ Part-No. HW-GP-03-004-00

- Compatible with Power Supply Cable (Part-No. HW-VXX-03-011-01)

weight: 0.12 kg



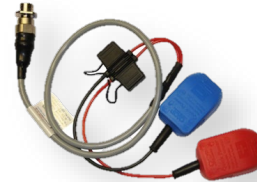
intended for combined use!

Adapter Cable, 1m, from 7 pole supply cable to 12 V PbGel battery (“quick action”)

 Part-No. HW-GP-03-006-00

- Compatible with Power Supply Cable (Part-No. HW-VXX-03-011-01)
- with “quick action” battery pole connectors

weight: 0.35 kg



Adapter Cable, 1m, from 7 pole supply cable to 12 V PbGel battery (“crocodile”)

 Part-No. HW-GP-03-007-00

- Compatible with Power Supply Cable (Part-No. HW-VXX-03-011-01)
- Compatible with Power Supply Cable (Part-No. HW-VXX-03-011-01)
- with “crocodile” battery pole connector


weight: 0.32 kg



intended for combined use!

Camera and Camera Accessories


Sony ILX-LR1 Camera

 Part-No.: HW-CAM-09-022-00

weight: 0.24 kg



Sony Lens FE 14 mm F 1.8 GM

 Part-No. HW-CAM-10-071-00

weight: 0.5 kg



RIEGL GNSS RTK Receiver with mount for Sony ILX-LR1, Ri-RTKCM2

 Part-No.: HW-VZI-06-018-00

- GNSS corrections received via WLAN
- Sony ILX-1LR camera is not included

weight: 0.80 kg



***RIEGL* camera mount for RICOH THETA Z1, Ri-RTZ1CM2**

 Part-No. HW-VZI-06-019-00

- power supplied via scanner
- with integrated GNSS L1 receiver
- easy to mount on the scanner
- RICOH THETA Z1 camera is not included
- with USB connector (USB-A 2.0, for external USB / WLAN adapter, on request)

weight: 0.4 kg



***RIEGL* camera mount with RICOH THETA Z1, Ri-RTZ1CM2**

 Part-No. HW-VZI-06-019-01

- power supplied via scanner
- with integrated GNSS L1 receiver
- easy to mount on the scanner
- with USB connector (USB-A 2.0, for external USB / WLAN adapter, on request)

weight: 0.6 kg



Accessories for Transport and Protection

Scanner Carrying Case with Sony ILX-LR1

 Part-No. HW-VZXX-05-020-00

With 4 hinged handgrips and wheels, splash-proof, foam lined to fit shape of the *RIEGL* VZ-600i scanner with camera and cables.

Dimensions: 595 x 343 x 268 mm

weight: 5.10 kg



Carrying Case for Ri-RTKM | Ri-RTZ1CM | Ri-RTZ1CM2 | Ri-GNSS-t-L1

 Part- No. HW-VZXX-05-021-00

This case is compatible with the following VZ-600i / VZ-1200i accessories:

- *RIEGL* GNSS RTK Receiver **Ri-RTKM**
- *RIEGL* camera mount with RICOH THETA Z1 **Ri-RTZ1CM2**
- *RIEGL* GNSS Receiver **Ri-GNSS-t-L1**

weight: 1.6 kg



Set of Protection Caps

 Part-No. HW-VZXX-06-098-00

weight: 0.02 kg



Scanner "backpack" for carrying a 3D laser scanner VZ-i Series

 Part-No. HW-GP-06-459-01

- standard backpack for transporting a *RIEGL* VZ-400i, VZ-2000i, VZ-600i with mounted Ri-RTKM

weight: 2.30 kg



Scanner „backpack“ for carrying a 3D laser scanner

 Part-No. HW-GP-06-458-01

- standard backpack for transporting a *RIEGL* VZ-600i, VZ-4000, VZ-4000i²⁵, VZ-6000

weight: 2.70 kg

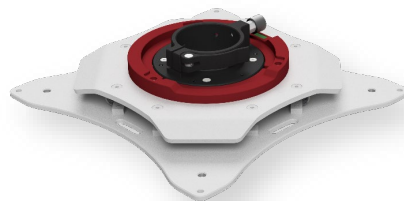


Accessories for Kinematic Data Acquisition

VZ-i-Car-Mount

 Part-No. HW-VZI-06-032-00

weight: 3.8 kg



Retroreflectors

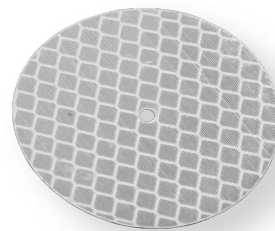
Flat Circular Retroreflectors

Included in the Scanner Basic Configuration:

- Part-No. HW-GP-06-002-01
(25 pieces, 50 mm)

Not Included in the Scanner Basic Configuration:

- Part-No. HW-GP-06-002-00
(100 pieces, 50 mm) weight: 0.15 kg
- Part-No. HW-GP-06-003-00
(100 pieces, 100 mm) weight: 0.40 kg



Cylindrical Retroreflectors

- Part-No. HW-GP-06-271-00
(50 x 50 mm) weight: 0.35 kg
- Part-No. HW-GP-06-274-00
(100 x 100 mm) weight: 1.10 kg

- 5 pieces each



Biaxial Bireflex Flat Circular Retroreflectors

- Part-No. HW-GP-06-454-00
 - 50 mm each
 - mounted on universal joints

weight: 0.07 kg



Other Accessories

TCP/IP Cable M12-RJ45, 1m

 Part-No. HW-GP-03-055-00

weight: 0.15 kg



TCP/IP Cable M12-RJ45, 3m

 Part-No. HW-GP-03-056-00

weight: 0.25 kg



USB Debug Cable for, 1.5m

 Part-No. HW-VZ-03-000-00

weight: 0.05 kg



CF-Express Typ B Card Reader PKT

➤ Part-No. HW-VZI-06-010-00

weight: 0.22 kg



CF-Express Card™ Card

Included in the scanner basic configuration

➤ Part-No. HW-VZI-06-011-00
(512 GB)

Not included in the scanner basic configuration

➤ Part-No. HW-VZI-06-011-01
(1 TB)

➤ Part-No. HW-VZI-06-011-02
(2 TB)

available from February 2026, only for
RIEGL VZ-1200i

CF-Express Card™ Typ B

weight: 0.02 kg



Service Options

Basic Service Package for VZ-600i

 Part-No. HW-VZ600-11-000-00

It is recommended at basic service intervals of

- 3000 hours of total scan operating time OPTIME[2] or OPTIME[3]
(= scanning mechanism in operation)
- or 2 years

whichever occurs earlier.

It comprises:

1. unpacking and cleaning of the instrument
2. laying out of service paper work
3. first functional check
4. cleaning of the beam exit window
5. Installation of firmware upgrades (if applicable)
6. check or re-calibration of the optional adjustment (range-finder unit)
7. check or re-calibration of the scanner at the *RIEGL* test field
8. check or re-calibration of the orientation sensors at the *RIEGL* test field
9. check or re-calibration of the internal camera calibration
10. test of max. measurement range
11. final instrument check at the *RIEGL* test area
12. preparation of calibration and test certificates
13. repacking the instrument for shipment

Digital Camera Calibration Service for V-Line Scanner (Sony ILX / Sony 7RIV)

 Part-No. ST-GP-11-002-00

Provides complete set of camera calibration parameters for use in RiSCAN PRO including internal calibration, lens distortion parameters and mounting calibration parameters. Parameters are delivered within a RiSCAN PRO project. Calibration statistics included (available for camera-lens combinations as recommended by *RIEGL* LMS).

Basic Service Package for VZ-1200i

 Part-No. HW-VZ1200-01-000-00

It is recommended at basic service intervals of

- 3000 hours of total scan operating time OPTIME[2] or OPTIME[3]
(= scanning mechanism in operation)
- or 2 years

whichever occurs earlier.

It comprises:

1. unpacking and cleaning of the instrument
2. laying out of service paper work
3. first functional check
4. cleaning of the beam exit window
5. Installation of firmware upgrades (if applicable)
6. check or re-calibration of the optional adjustment (range-finder unit)
7. check or re-calibration of the scanner at the *RIEGL* test field
8. check or re-calibration of the orientation sensors at the *RIEGL* test field
9. check or re-calibration of the internal camera calibration
10. test of max. measurement range
11. final instrument check at the *RIEGL* test area
12. preparation of calibration and test certificates
13. repacking the instrument for shipment

Post-Processing Software

RiSCAN PRO Static LiDAR Data Processing

- **Instrument Serial Number License (SNL)**
Part-No. SW-TLS-07-000-00

Included in the scanner basic configuration

- **Floating License Package (SIL)**
Part-No. SW-TLS-07-001-00

RiSCAN PRO Instrument Serial Number License mandatory

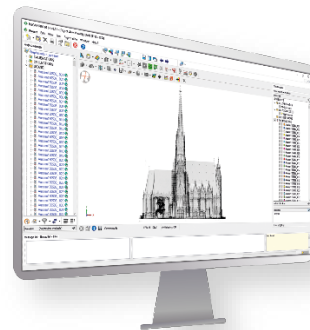
[Click or scan for the specifications!](#)



Extended Maintenance for RiSCAN PRO
Static LiDAR Data Processing

- **Instrument Serial Number License (SNL)**
Part-No. SW-TLS-12-000-00

- **Floating License Package (SIL)**
Part-No. SW-TLS-12-001-00




RIEGL Deep Learning Suite Image Content Anonymization


- **Instrument Serial Number License (SNL)**
Part-No. SW-GP-07-009-00

- **Floating License Package (SIL)**
Part-No. SW-GP-07-010-00



RiSOLVE Static LiDAR Data Processing for Rapid Response


 **Instrument Serial Number License (SNL)**
Part-No. SW-TLS-07-004-00


 **Floating License Package (SIL)**
Part-No. SW-TLS-07-005-00

[Click or scan for the specifications!](#)




Extended Maintenance for RiSOLVE
Static LiDAR Data Processing for Rapid
Response


 **Instrument Serial Number License (SNL)**
Part-No. SW-TLS-12-004-00

 **Floating License Package (SIL)**
Part-No. SW-TLS-12-005-00



RiMINING Static LiDAR Data Processing for Mining


 **Instrument Serial Number License
(SNL)**
Part-No. SW-TLS-07-002-00


 **Floating License Package
(SIL)**
Part-No. SW-TLS-07-003-00

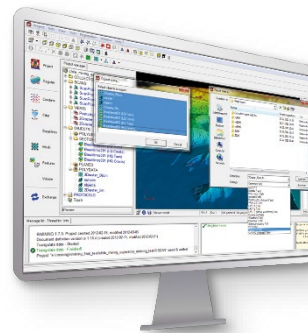
[Click or scan for the specifications!](#)



Extended Maintenance for RiMINING Static LiDAR Data Processing for Mining

 **Instrument Serial Number License
(SNL)**
Part-No. SW-TLS-12-002-00

 **Floating License Package
(SIL)**
Part-No. SW-TLS-12-003-00



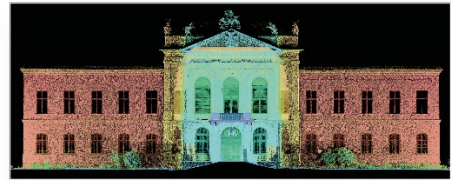
Post-Processing Software | Plug-Ins

RiPANO Publishing

- **Instrument Serial Number License (SNL)**
Part-No. SW-TLS-07-006-00

- **Floating License Package (SIL)**
Part-No. SW-TLS-07-007-00

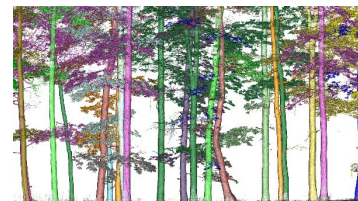
[Click or scan for the specifications!](#)



LIS TreeAnalyzer Plug-In

- **Instrument Serial Number License (SNL)**
Part-No. SW-TLS-07-015-00

- **Floating License Package (SIL)**
Part-No. SW-TLS-07-014-00

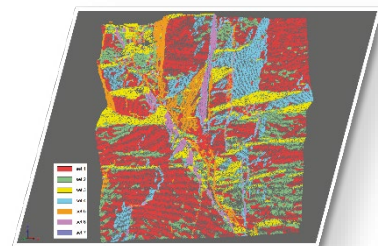


LIS GeoTec Plug-In


- **Instrument Serial Number License (SNL)**
Part-No. SW-TLS-07-008-00


- **Floating License Package (SIL)**
Part-No. SW-TLS-07-009-00

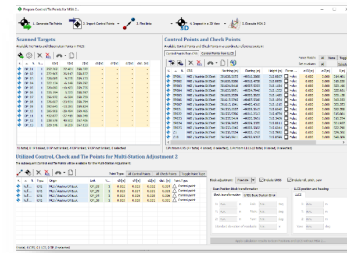
[Click or scan for the specifications!](#)




Static Multi Station Adjustment License


- 
Instrument Serial Number License (SNL)
 Part-No. SW-TLS-07-010-00

- 
Floating License Package (SIL)
 Part-No. SW-TLS-07-011-00





RiSCAN PRO Kinematic Data Processing

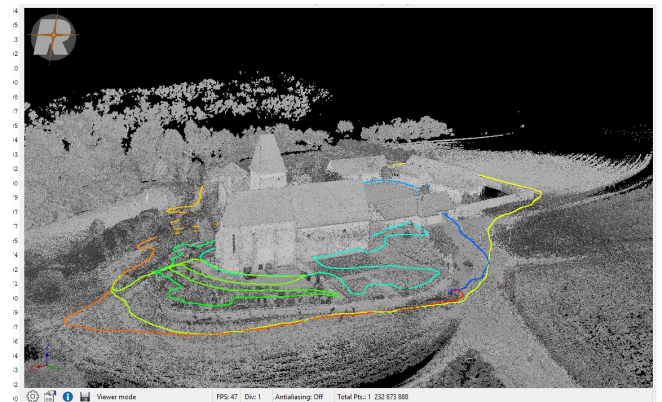
- 
Instrument Serial Number License (SNL)
 Part No. SW-TLS-07-012-00

- 
Floating License Package (SIL)
 Part No. SW-TLS-07-013-00


RiUNITE – RiWORLD functionality, LIGHT


- 
Instrument Serial Number License (SNL)
 Part-No. SW-GP-02-158-00

- 
Floating License Package (SIL)
 Part-No. SW-GP-02-157-00



Extended Maintenance for RiUNITE – RiWORLD functionality, LIGHT

- 
Instrument Serial Number License (SNL)
 Part-No. SW-GP-12-151-00

- 
Floating License Package (SIL)
 Part-No. SW-GP-12-150-00

RIEGL Post-Processing | Apps

***RIEGL* Monitoring Apps for VZ-i Series (Monitor +, Monitoring, DesignCompare, Slope Angle)**

 Part No. SW-GP-02-102-00

Three easy-to-use to innovative apps, which support users in their daily work, especially in critical situations. Visualization of the results via GUI or web viewer for detailed analysis.

- Monitor + App: Monitoring of surface and targets/prisms in one. A flexible solution for permanent, periodic, and sporadic data acquisition.
- Monitoring App: Data comparison and visualization of differences to a reference data set.
- Design Compare App: Data comparison to a given 3D design model. Visualization of undercut and overcut.
- Slope Angle App: Calculation and visualization of local slope angles.

[Click or scan for the specifications!](#)

