

RIEGL LiDAR FOR AIRBORNE TOPO-BATHYMETRY

FAST. PRECISE. EFFICIENT.

NEW



40° FOV
circular scan pattern
up to 100 kHz
measurement rate
>2 Secchi depths
water penetration

5 MPx digital
camera, IMU/GNSS,
RIEGL RiLOC, and
RIEGL software
FULLY INTEGRATED

5.4 kg / 11.9 lbs
(including camera
& IMU/GNSS)

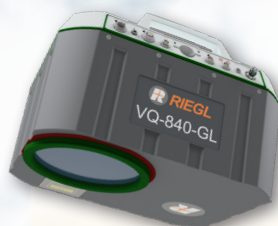


40° FOV
elliptic scan pattern
up to 200 kHz
measurement rate

>2 Secchi depths
water penetration

24 MPx digital
camera, IMU/GNSS,
RIEGL RiLOC, and
RIEGL software
FULLY INTEGRATED

10.3 kg / 22.7 lbs
(including camera
& IMU/GNSS)



40° FOV
elliptic scan pattern
up to 200 kHz
measurement rate

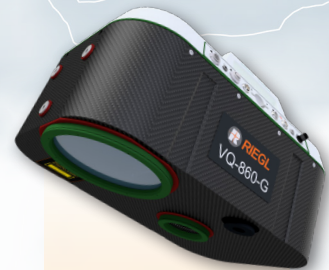
adjustable receiver
field of view for
operational flexibility

extra full waveform
analysis tools

>2 Secchi depths
water penetration

integrated
12 MPx / 24 MPx
digital camera
OPTIONAL

9.8 - 10.8 kg
22 - 23.8 lbs
(depending on
system configuration)



40° FOV
elliptic scan pattern
up to 100 kHz
measurement rate

enhanced
performance and
large operational
envelope from
75 m up to
500 m AWL / AGL
(About Water Level resp.
About Ground Level)
flight altitude

>2.5 Secchi depths
water penetration

integrated
12 MPx / 24 MPx
digital camera
OPTIONAL

15 - 18.5 kg
33 - 40.7 lbs
(depending on
system configuration)

NEW VUX-820-G

VQ-840-GE

VQ-840-GL

VQ-860-G

ready to use all-in-one package

configurable for highest flexibility

An attractive portfolio tailored to every task in LiDAR bathymetry:

coastline mapping, habitat observation and change detection, river and inland waterbody survey, detailed underwater infrastructure and object detection, hydro engineering, hydro-archeology, water reservoir monitoring



RIEGL TOPO-BATHYMETRIC SENSORS & SYSTEMS
www.riegl.com

Copyright RIEGL Laser Measurement Systems GmbH © 2026 – All rights reserved.
Use of this data sheet other than for personal purposes requires RIEGL's written consent.
This data sheet is compiled with care. However, errors cannot be fully excluded and alternations might be necessary.



RIEGL®