

RiMINING

for RIEGL VZ-Line Laser Scanners

- *workflow automation*
- *automatic data registration*
- *advanced filtering algorithms*
- *feature extraction (contours, profiles, breaklines)*
- *volume calculation, surface comparison*
- *support for many mining software exchange formats*
- *full compatibility with RiSCAN PRO*

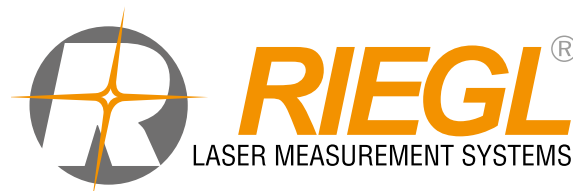
RiMINING is designed to optimize and simplify scan data processing in open-pit mining. The focus of the software design is on workflow simplification and automation. For advanced data-processing full compatibility with RiSCAN PRO is provided.

RIEGL VZ-xxx field-data import and registration without any targets speeds up field-surveying tremendously. Automatic Registration is accomplished utilizing state-of-the-art alignment algorithms in combination with RIEGL VZ-xxx built-in sensors (GPS, compass, inclination sensors). Advanced filtering algorithms enable automatic elimination of vegetation, objects and outliers. Typical mining post-processing tasks like breakline detection and volume calculation are fully supported. The extracted information can also be utilized by mine planning software because of RiMINING's support for various mining exchange formats.



- *Surveying of open-pit mines, quarries and dump sites*
- *Change detection of excavated areas*
- *Fillgrade and mass calculation*
- *Extraction of input data for site modeling*

visit our website www.riegl.com



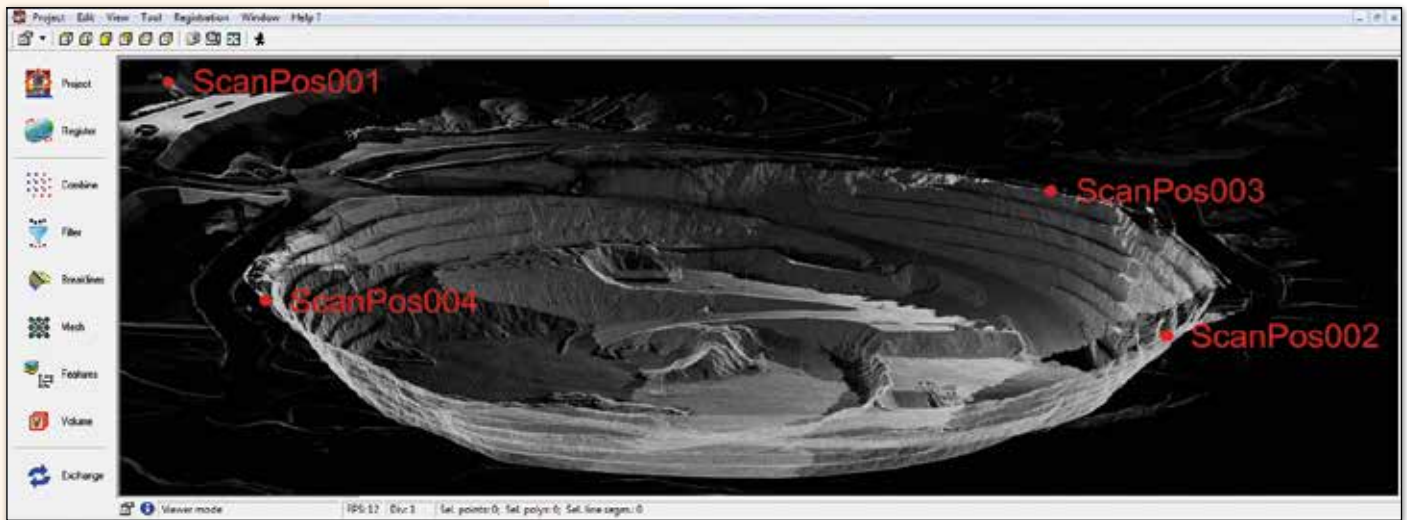
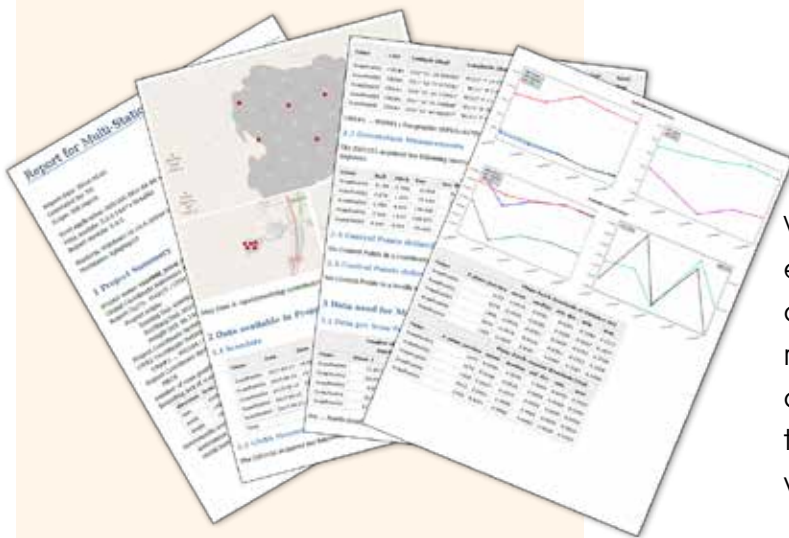


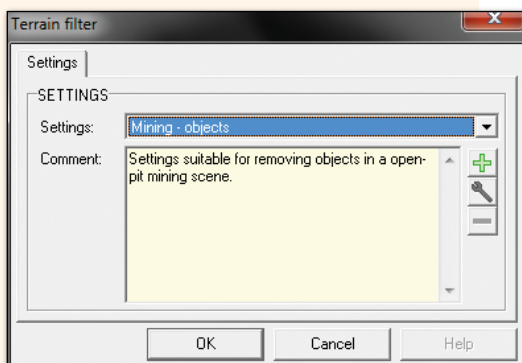
Fig.1 Sample of an open pit mine scanned with a **RIEGL VZ-1000** and automatically registered in **RiMINING**



Voxel datasets and plane patches are extracted from the acquired scan data automatically. This information is used to register the scan positions without the use of any artificial target, which reduces the onsite time significantly. Registration quality can be verified by a detailed statistical report.



Fig.2 Automatic filtering of artificial objects



To create reliable data sources for meshing, all artificial objects must be eliminated from the point cloud.

RiMINING provides an automated filter algorithm to remove these objects. Predefined settings for artificial objects, vegetation, and points underneath the real surface are provided. All settings are configurable by the user.

Breaklines are automatically extracted from the scan data and classified as toe and crest lines.

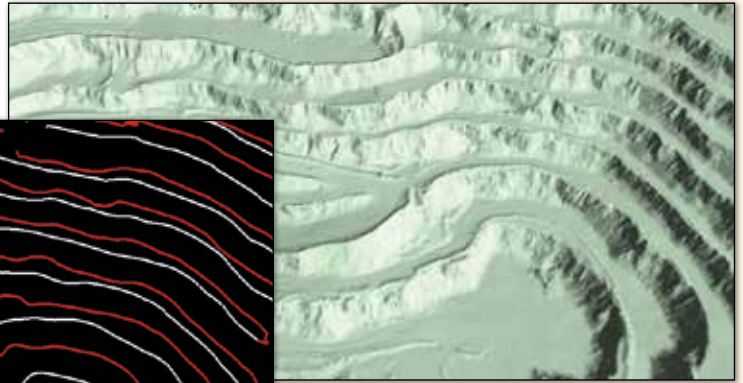
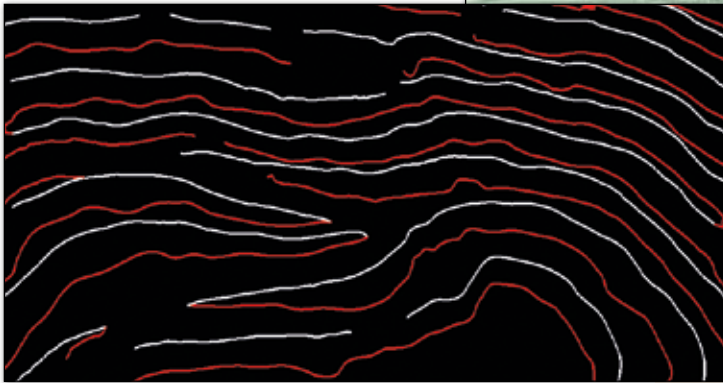


Fig.3 Breakline extraction tool

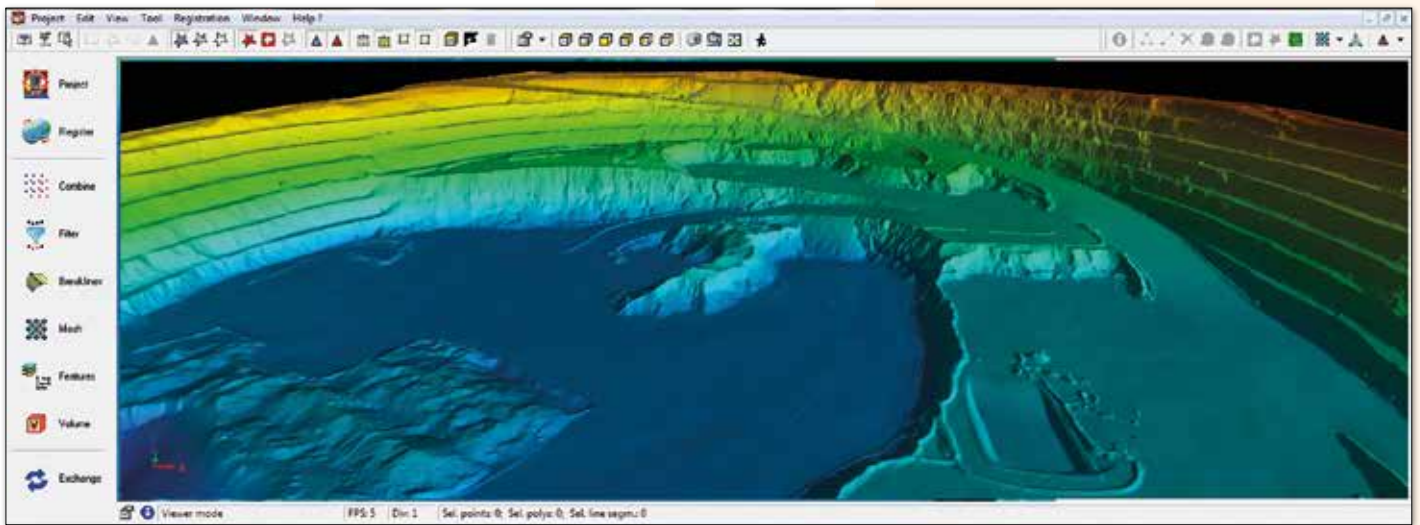


Fig.4 Sample of an open pit mine DTM

A powerful triangulation algorithm is used to create accurate watertight surfaces of the mine site utilizing a fusion of acquired scan data and the extracted breaklines. These surfaces are used for the creation of profiles and sections and as data bases in 3rd-party mine planning software. Intelligent smoothing- and decimating-functions are provided to reduce file sizes and data redundancy while ensuring integrity of the surface geometry information.

Differences between two surfaces can be visualized and calculated as cut- and fill-volumes.

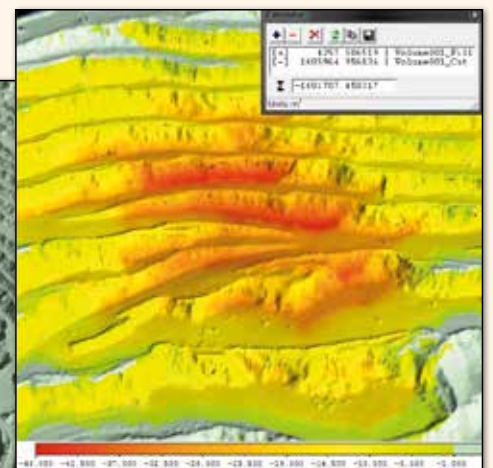
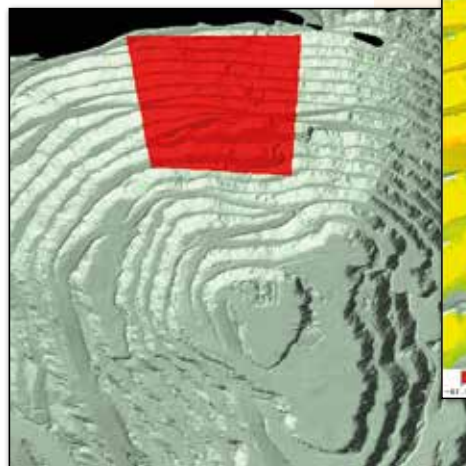


Fig.5 Volume calculation tool

1



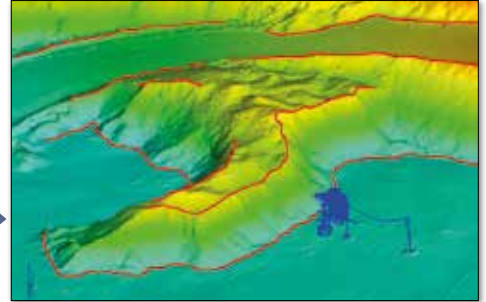
Preprocessing



2



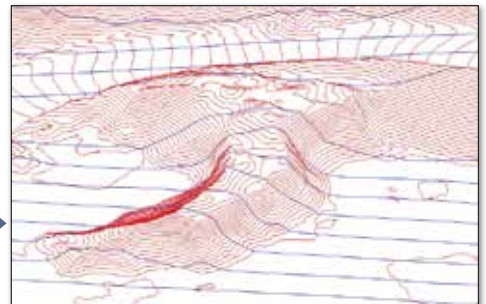
Surface Modeling



3



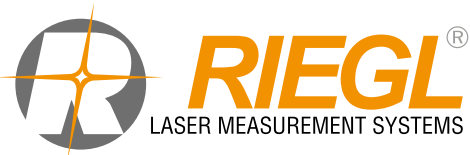
Feature Extraction



4



Export



RIEGL
Laser Measurement Systems GmbH
Riedenburgstraße 48
3580 Horn, Austria
Phone: +43 2982 4211
office@riegl.co.at | www.riegl.com

RIEGL USA Inc. | info@rieglusa.com | www.rieglusa.com
RIEGL Japan Ltd. | info@riegl-japan.co.jp | www.riegl-japan.co.jp
RIEGL China Ltd. | info@riegl.cn | www.riegl.cn
RIEGL Australia Pty Ltd. | info@riegl.com.au | www.riegl.com

www.riegl.com