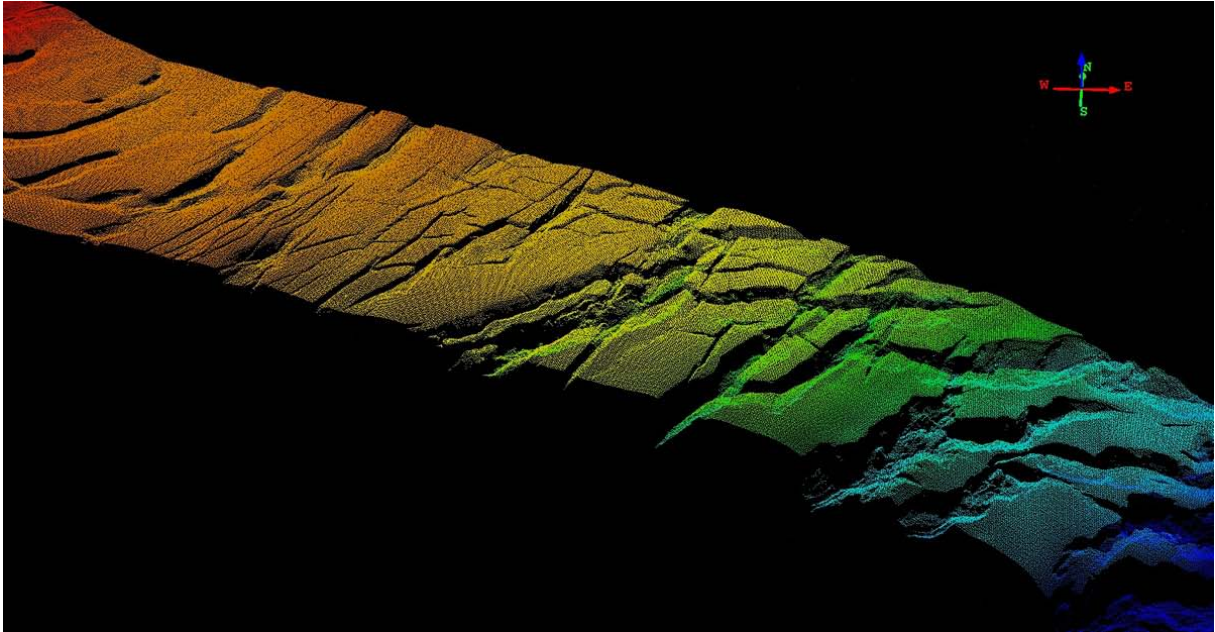
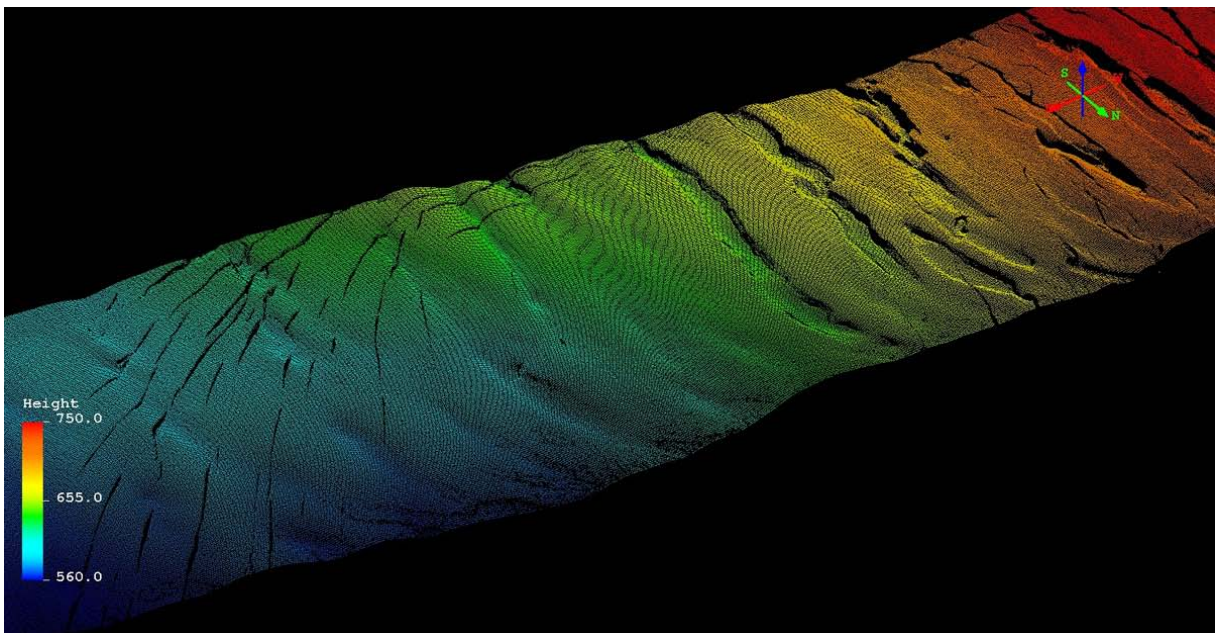


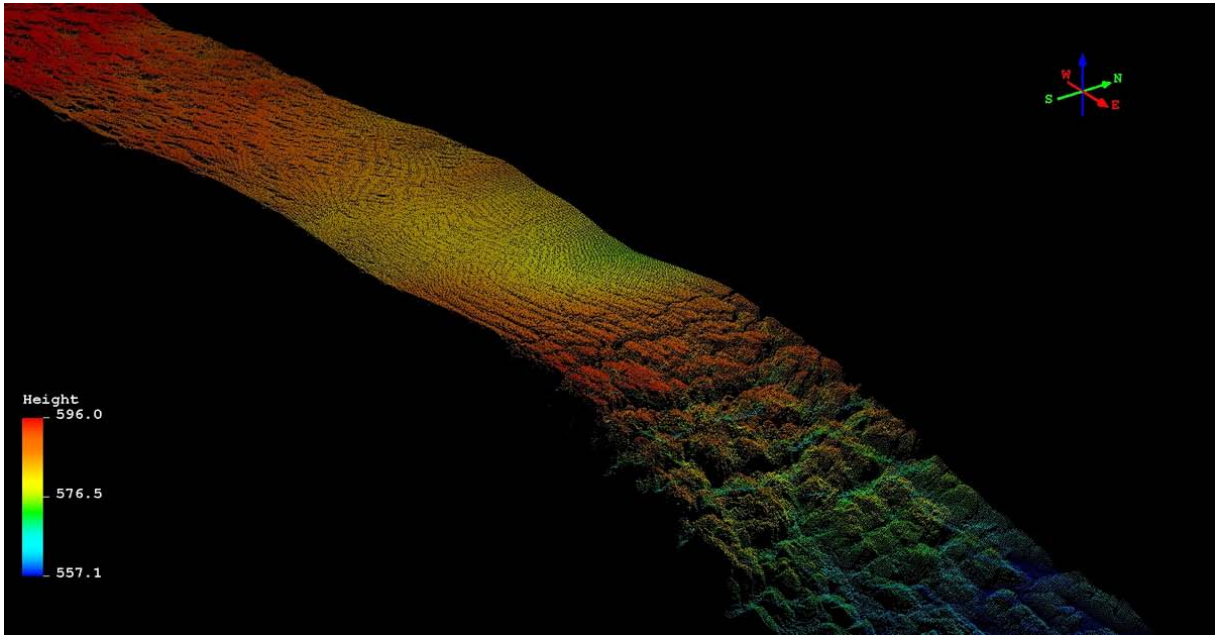
LIDAR Glacier Images:



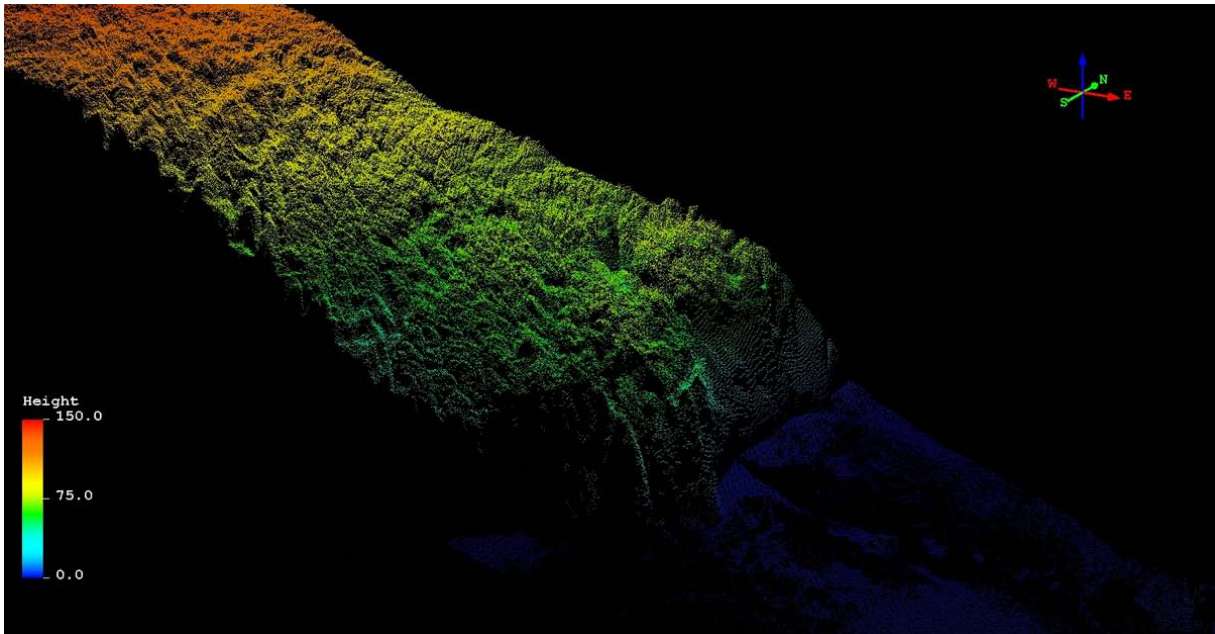
Guyot Glacier just above the lower icefall



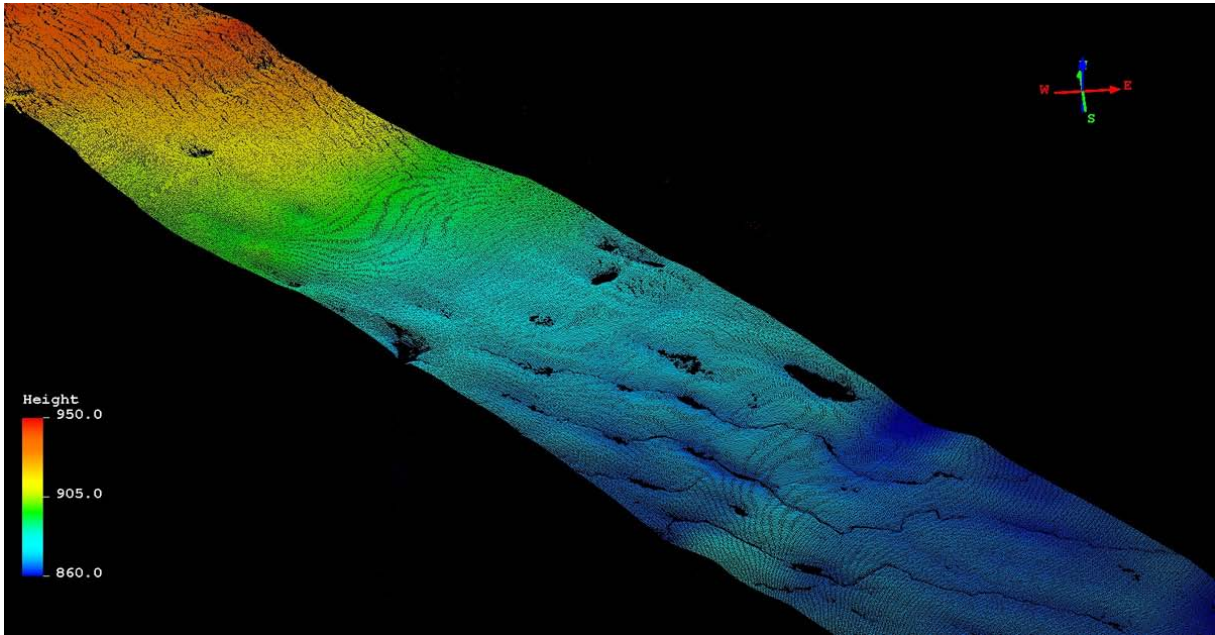
Upper Guyot Glacier



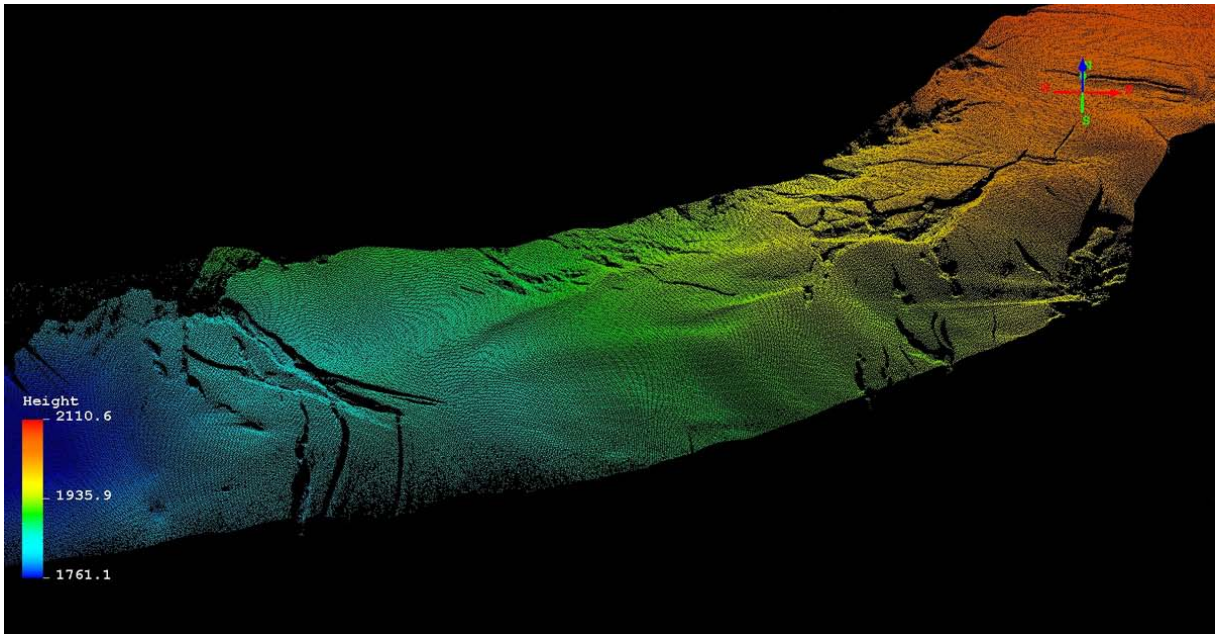
Guyot Glacier start of lower icefall



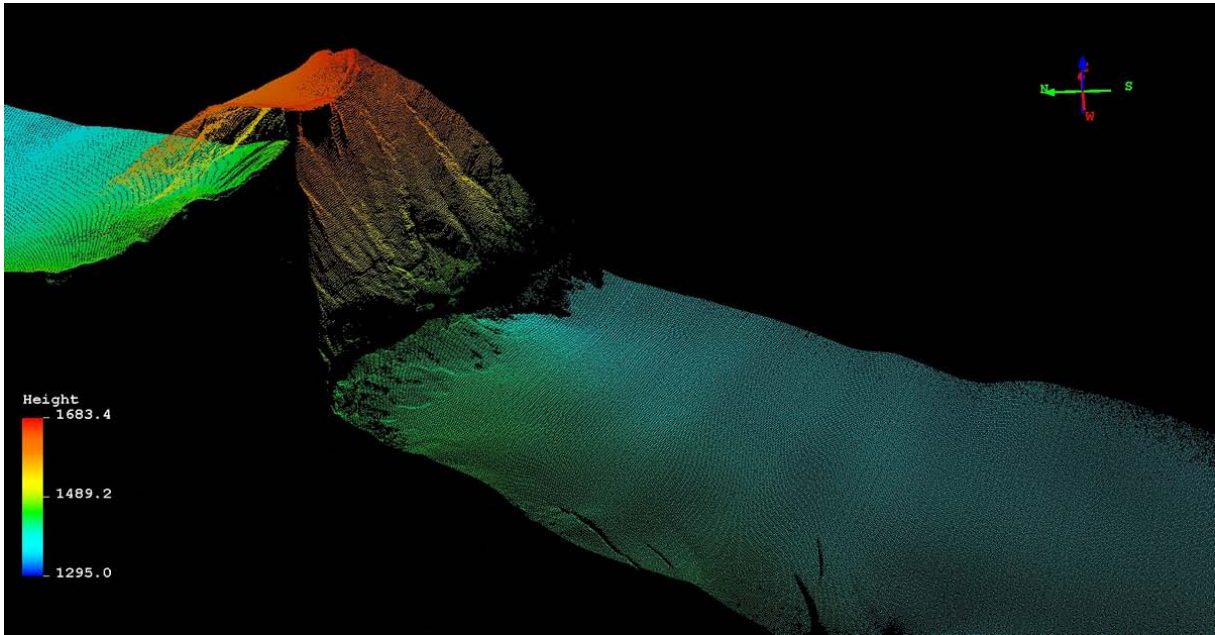
Tsaa Glacier terminus and calving front



Yahtse Glacier near the ELA



Upper Yahtse Glacier and the slopes of Mt. Miller



An unnamed peak passed over in transit between Yhtse and Guyot Glaciers.